



Article Number - 00040-2012

Date - 13th August 2012

Article applies to - WL510 Long Range Wi-Fi Adaptor

ISSUE: Using a Mac with the WL510

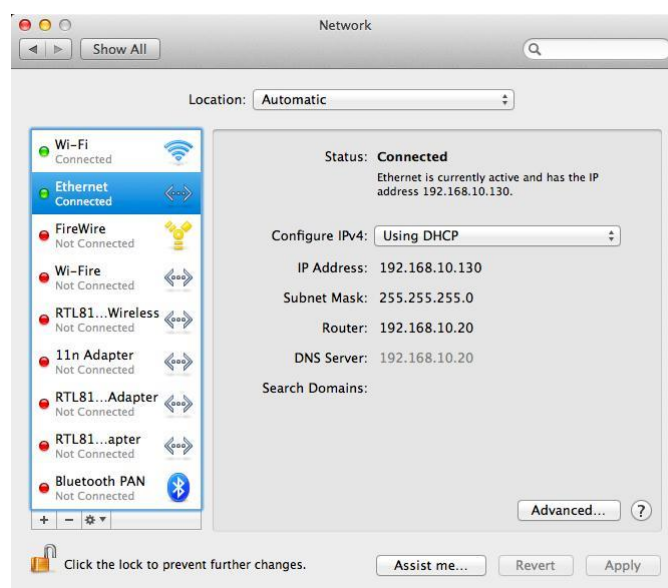
If you are new to Macs, setting up the networking on a boat can be tricky but Apple have provided a clever feature called "Locations" that allows you to have multiple network setups (profiles) that can be easily switched between, depending upon where you are and the network you wish to connect to.

Most people only ever use the "Automatic" setting but setting up an "On The Boat" type location makes connecting to our WL510 very easy and is well worth doing. This Tech Note will take you through the process.

SOLUTION:

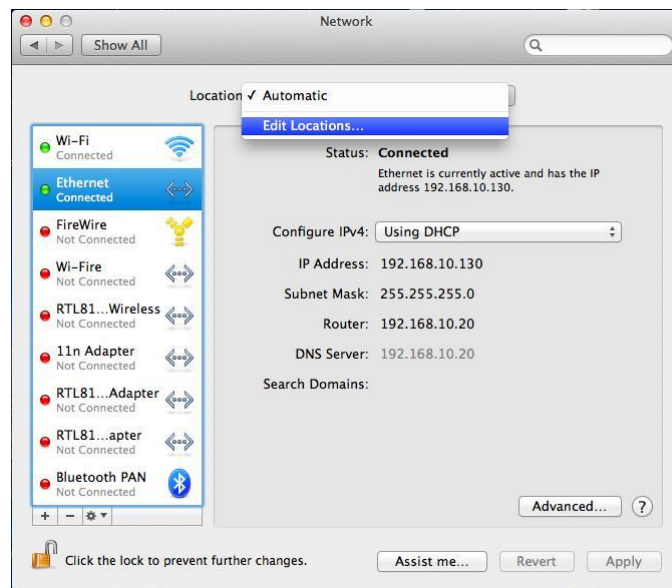
The following guide is for Macs connected directly to our WL510 with the supplied network cable;

- 1) With the Mac and WL510 turned off, connect the network cable between the two devices.
- 2) Turn on the WL510 and then boot up your Mac.
- 3) On the Mac, go to "System Preferences" and then click on the "Network" icon, you should see the following screen....

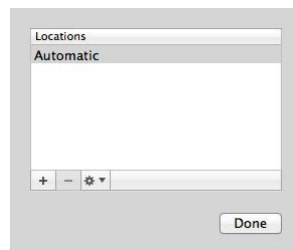


- 4) A typical Mac will have a few different network adaptors and these are listed in the left hand list in priority order. The internal Airport wireless adaptor usually takes priority and what I generally recommend is for people to setup a new "Location" profile which simplifies how you configure the network adaptors for different places you use your Mac in i.e. at home, in the office or in this case "On The Boat".

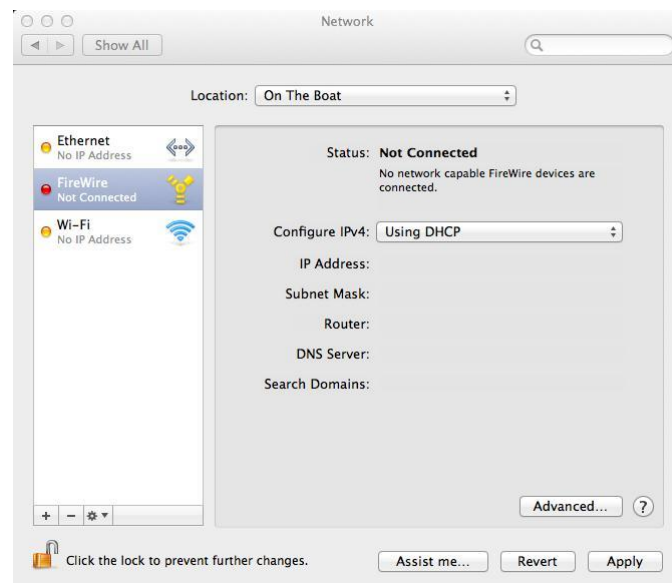
- 5) To create a new location, make sure the padlock at the bottom left of the network window is unlocked – you will be asked to enter your Mac’s administrator password. Then click on the arrows next to the “Automatic” entry in the Locations drop down menu and select “Edit Locations” as shown below...



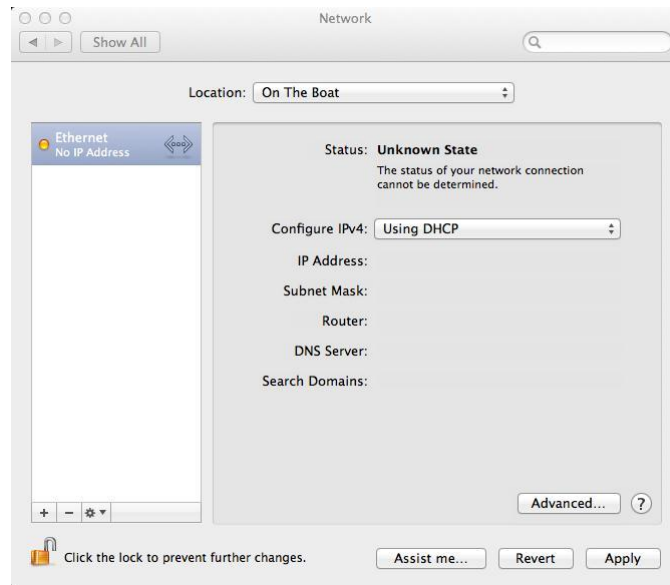
- 6) Now a pop-up window will appear showing the locations already created. Click the + button to create a new location....



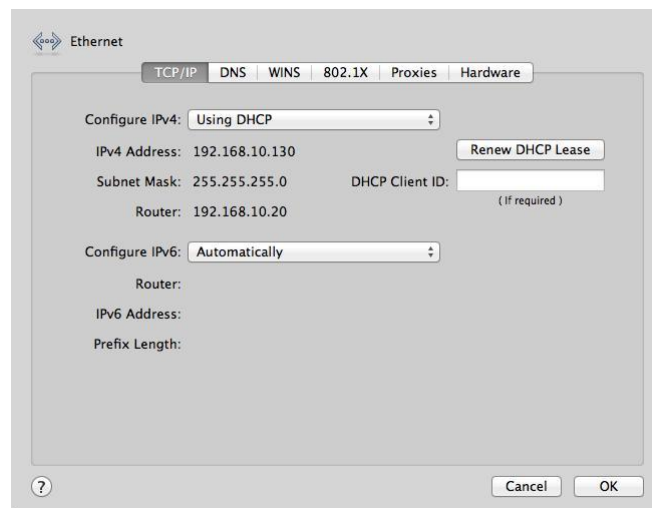
- 7) Give the location a name i.e “On The Boat” as I have called my location and a new network window will appear as shown below...



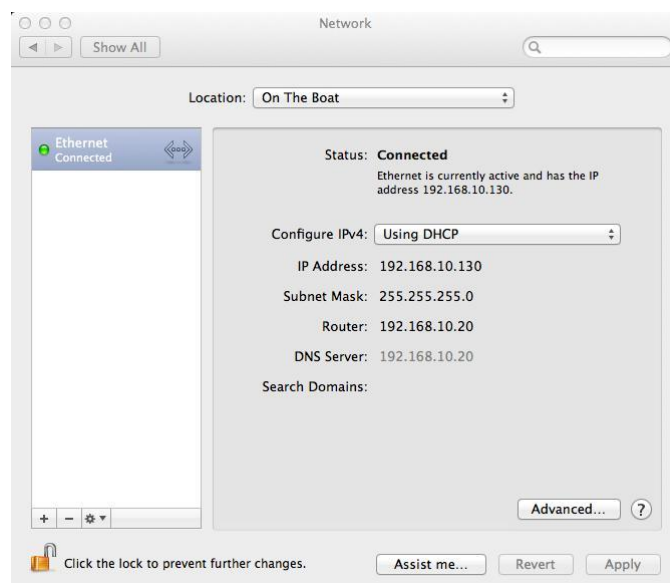
- 8) Now select each network adaptor that you will not use on the boat and click the – button to delete them, In this example I have deleted the “Firewire” and then the “Wi-Fi” adaptors as I will be using the wired “Ethernet” connection which is connected to the WL510....



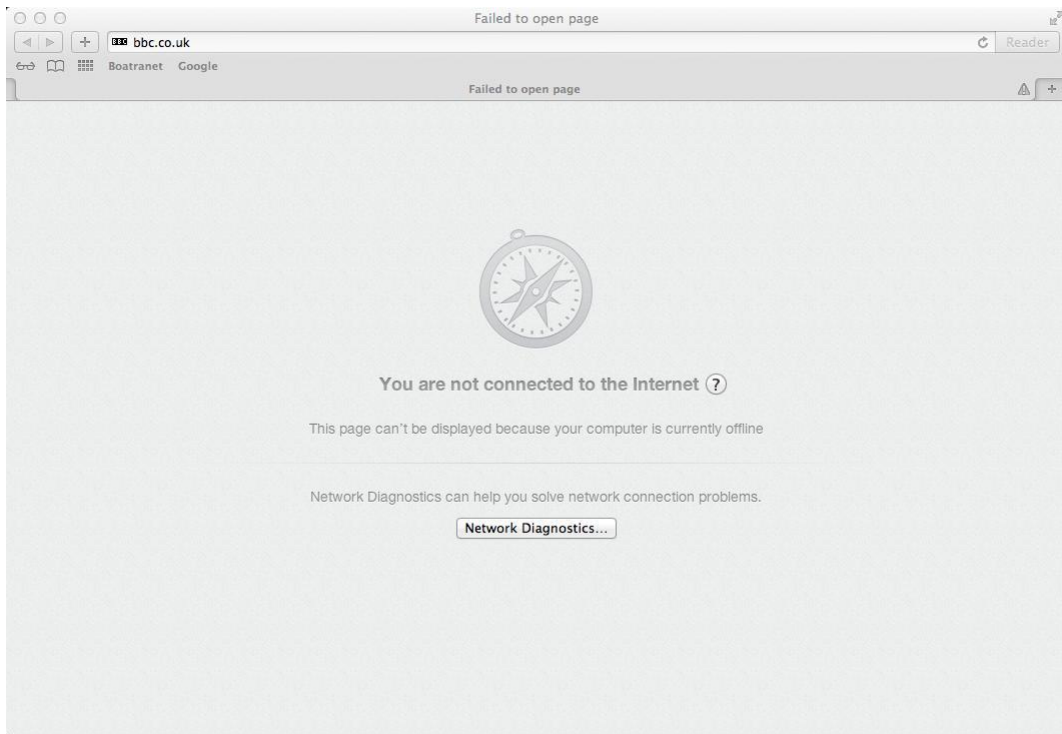
- 9) After you have created a new location like this, you often have to renew the IP address that the Mac gets from the WL510. If the IP Address, subnet Mask, Router, etc. are all blank, click on the “Advanced” button and on the next page click the “Renew Lease” button and then click “OK”...



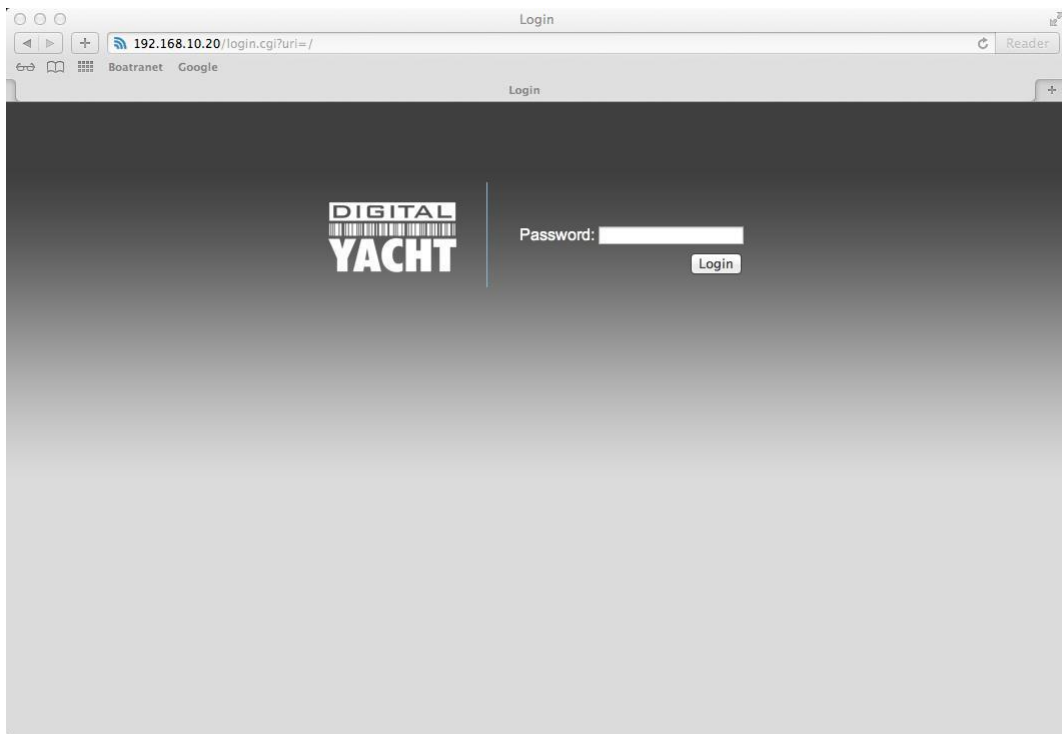
- 10) Your Mac should now have received the network settings from the WL510 and the network page will look similar to the page shown below, with a green indicator next to the “Ethernet” adaptor...



- 11) Before leaving the Network page, it is worth clicking the padlock to lock the settings and stop anyone else from changing these by accident.
- 12) Now open Safari or your web browser and you will see an unable to connect to the internet type screen...

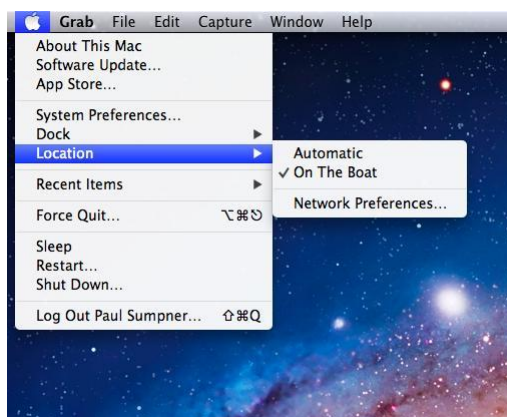


- 13) The reason for this, is that the WL510 has not been connected to a hotspot yet. Type 192.168.10.20 in to the browser address bar and you should be taken to the WL510 login page as shown below...



- 14) Now follow the WL510 instruction manual for details of how to scan for and connect to a hotspot.

So now, when you are on the boat, you can click on the Apple Icon in the top left hand corner of the desktop, click on “Locations” and then select the location profile you have created as below...



You can setup location profiles for everywhere you go, for instance “Home” could have just the internal airport for connecting to your wireless router, “Work” could have the particular static network settings that your IT engineer has given you, etc. Using the “Locations” feature makes it very simple to switch between completely different network setups with a couple of mouse clicks.

NOTE:- Remember to select “Automatic” again when you are off the boat.